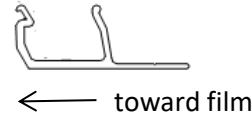


Duralock "2" installation - read before use.

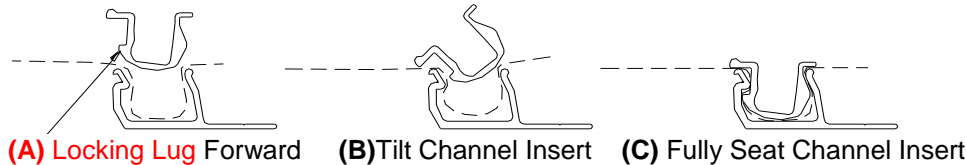
Part One: Fastening the alloy base.

1. The base of the Duralock2 must be fully supported by a structural rail.
2. The "Jaw" of the aluminium faces toward the cover being fastened.
3. Fasten with screws not more than 225mm apart* (use screw type to suit the structural rail – e.g timber, steel & alloy etc). A small locating groove on the strip indicates the screw position.
4. Take care to align the alloy joints and leave a 2mm expansion gap between the ends of the base part.



Part Two: Tensioning the cover over the aluminium jaw & position the first channel insert

5. Tension the cover over the jaw of aluminium.
6. **Important:** Ensure that the channel insert has the **locking lug (A) facing forward** !
7. Insert the strip beginning at their ends.
The "channel" insert with its front "Locking Lug edge" facing forward is inserted firstly. Tilt the front edge down **(B)** & whilst easing cover tension from behind locate the channel insert into the alloy groove using a rolling motion. Leave a small gap between strips 5-10mm to allow for heat expansion. Check that the channel is fully "open" in readiness for the bead insert **(C)**.



Part Three: Install the Locking Bead

8. Ensure that the channel is full seated & that the "Jaw" of the channel is fully open before pressing the locking bead into place.
9. Press one end of the locking bead with its rounded edge facing down fully into position. A soft headed mallet may be used gently to assist the rest of the bead strip into place.

NOTE: The locking bead must be a tight fit (not easily be removed by hand). If in doubt contact your supplier. An option is to add additional layers of material beneath the channel to "tighten" the fit

IMPORTANT REMINDER NOTES !

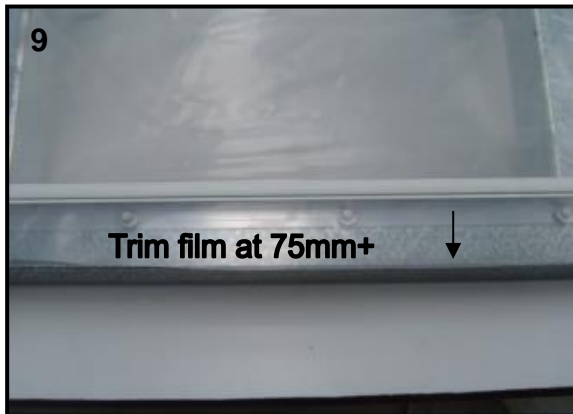
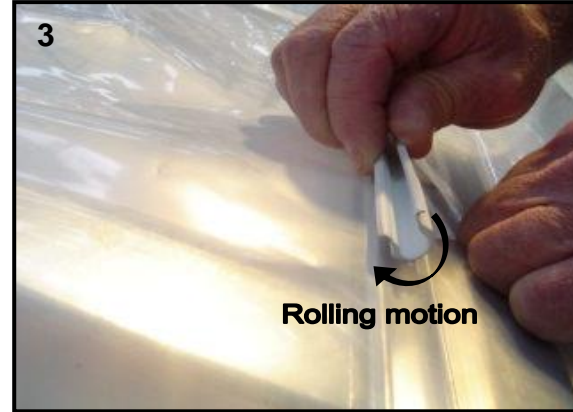
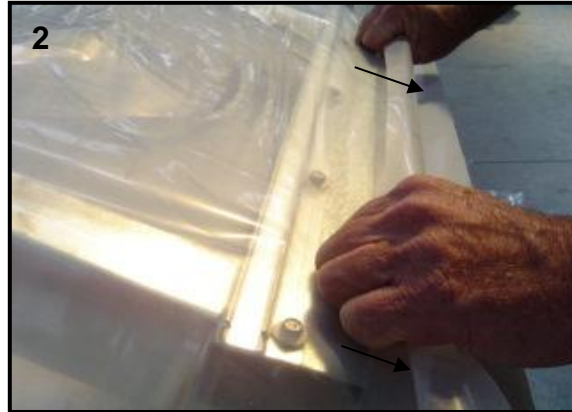
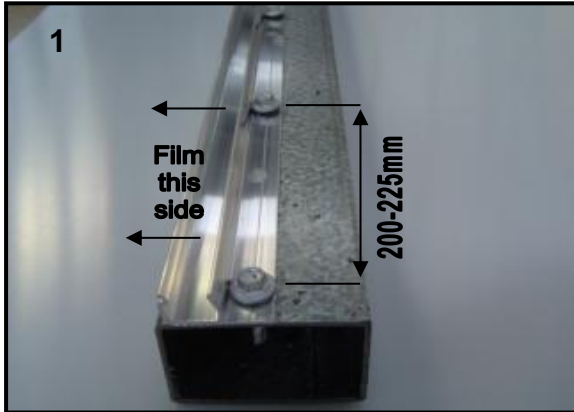
- The position of the cover, the direction of the locking lug on the channel insert, the full seating & opening of the channel before the bead insertion is essential for reliable holding and to prevent damage of the Cover.
- **Do not** place the cover between the two inserts! Always assemble the two inserts in two stages.
- If removal of the strips is required **always** remove the locking bead firstly then pull the trailing edge of the cover. Removal of channels in any other way can result in damage to the cover or alloy base.
- A "short-leg" version of the locking bead is available for fabrics & covers that measure above 350 microns thickness.
- If the locking bead feels loose when fitted, - please insert an additional layer of cover to tighten the system or call your supplier.

Ph. Australia: 1 800-024-680 www.redpath.com.au

Ph. New Zealand: 0508-733-728 www.redpath.co.nz



Duralock "2" installation - picture guide.



1. Screw Spacing
2. Pull the cover tight over the aluminium jaw.
3. Position the channel over the groove with 'locking lug' facing forward & downward. Using a rolling motion insert the channel, whilst at the same time easing the cover tension from behind.
4. Important: Fully seat the channel insert & spread its jaw fully open
5. Position the locking bead with the rounded edge facing down.
6. With the channel fully spread, press the locking bead into place, beginning at its end. (It should be a firm fit)
7. Insert the bead fully making sure that it feels "tight" (cannot be removed easily by hand)
8. Completed view
9. Completed view (2)
Trim the rear facing part of the cover at 75mm

