



Product Index

Click on the item of interest for each product header to get to direct link to website page and see prices



Factory & Office address:

16 Bounty Place, Kelvin Grove, Palmerston North 4414

Postal: PO Box 9058, Terrace end, Palmerston North 4441

Website: www.redpath.co.nz Email: redpath@redpath.co.nz

Phone: 0508-733-728

Table of Contents

Greenhouse films 2	Lockstrip Alloy & UPVC	10	Home Tunnelhouses	20		
Duratough ® 225mu	2	Lok-Clip - Alloy & UPVC	11	Home Shadehouses	21	
Duratough ® 215mu	2	One piece "A leg"	11	Home Polyshadehouse	21	
Sunsaver 202mu	2	F-Link alloy insert	11	Domestic accessories	21	
Durashade™ 200-215mu	3	V lock	11	Domestic accessories	22	
Polyweave™ 300mu	3	Wire omega cable clip	11	Semi Commercial buildings 23		
Duracluche 110mu	3	Roof battens	12	Lifestylers greenhouses	23	
Tapes & Sealants 4	Ventilation 12	Roof Ventilation	12	Quick build Tunnelhouses	23	
Batten tape	4	Auto sidewall ventilation	12	Quick build Calf shelters	23	
All weather repair tape	4	Manual sidewall ventilation	12	Commercial buildings 24		
Patchbond repair tape	4	Environmental control	13	Vented roof designs	24	
Polyguard hotspot tape	4	Twinskin equipment	13	Arch roof designs	24	
Gutter solvent cleaner	5	Cool / Stirrer fans..... 13	Vortex air stirring fan	13	Quick build shadehouse	24
Gutter silicone sealant	5	Extraction greenhouse fans	13	Arch or Truss Shadehouse	25	
Polybelt strap	5	Kerilea cloche system 14	Steel & Aluminium profiles 15	Quarantine Structures	25	
Roof retaining rope	5	Steel	15	Medicinal Marijuana Hemp	25	
Aluminium Foil tape	5	Chain & Heat shrink	15	Sports shelter 26		
Gutter Liner 6	Aluminium Extrusions	(various)	15	Golf Driving Range Shelter	26	
Fasteners, Brackets, Doors 6	Pine raised gardens..... 16	Staging shelves..... 18	Home domestic house 18	Cricket Training Facilities	26	
Screws (various)	6	Box only gardens	16	Industrial..... 26		
Bolts, Nuts & Washers	7	Complete with cloche	17	Garden centre	26	
Omega Clips	7	Home Glasshouses	18	Industrial	26	
Brackets (various)	7	Home Polycarbonate	18	Retail	27	
Saddles (various)	7	houses	18	Dairy & Animal housing..... 27		
Ground screw anchors	7	Home Polycarbonate-Glass	19	Dairyshelters™	27	
Doors, Tracks & Rollers	8	houses	19	Animal housing	27	
Bulkbags	8	Home Glass/-	19	Animal Shade Shelters	28	
Fabric & Textiles 8	Home Glass/-	Polycarbonate Accessories	19	Aquaculture housing	28	
Insulnet™ frost fabric	8	Home Glass/-	19	Calf shelters	28	
Biomesh™ insect mesh	8	Polycarbonate Accessories	20	About us 29		
Weedshield™ Weedmat	9	Home Glass/-	19	Contacts and Information 30		
Windbreak™	9	Polycarbonate Accessories	20	Terms & Conditions of Sale..... 31		
Shadecloth™	9	Home Glass/-	19	Notes 34		
Clipping fastening systems 10	Home Glass/-	Polycarbonate Accessories	20			
Duralock2 ® Alloy & UPVC	10					

Greenhouse films

Duratough® 225mu

[\(VIEW WEBPAGE\)](#)

Clear Long life commercial greenhouse film
 Heavy duty 225 micron thickness
 6 year UV warranty



Code	Colour	Width x Length
DURTP14.8	Natural/Clear	14.8m x per metre

Duratough® 215mu

[\(VIEW WEBPAGE\)](#)

Clear Long life commercial greenhouse film
 Heavy duty 215 micron thickness
 5 year UV warranty



Code	Colour	Width x Length
DURTM2	Natural/Clear	2m x per metre
DURTM3	Natural/Clear	3m x per metre
DURTM4.1	Natural/Clear	4.1m x per metre
DURTM5	Natural/Clear	5m x per metre
DURTM6.3	Natural/Clear	6.3m x per metre
DURTM7.2	Natural/Clear	7.2m x per metre
DURTM8.2	Natural/Clear	8.2m x per metre
DURTM9.2	Natural/Clear	9.2m x per metre
DURTM10.5	Natural/Clear	10.5m x per metre
DURTM12	Natural/Clear	12m x per metre
DURTM13.1	Natural/Clear	13.1m x per metre
DURTM14.5	Natural/Clear	14.5m x per metre

Sunsaver 202mu

[\(VIEW WEBPAGE\)](#)

Clear Long life commercial greenhouse film
 Heavy duty 202 micron thickness
 4 year UV warranty



Code	Colour	Width x Length
SUNSAV2	Natural/Clear	2m x per metre
SUNSAV3.2	Natural/Clear	3.2m x per metre
SUNSAV4.2	Natural/Clear	4.2m x per metre
SUNSAV6.5	Natural/Clear	6.5m x per metre
TBLUF2008	Natural/Clear	8m x per metre
TBLUF2009.2	Natural/Clear	9.2m x per metre

Durashade™ 200-215mu

[\(VIEW WEBPAGE\)](#)

White light shaded greenhouse film
 Heavy duty 215 micron thickness



Code	Colour	Width x Length
DURSHAM9.2	White	9.2m x per metre
DURSHAM13.1	White	13.1m x per metre

Polyweave™ 300mu

[\(VIEW WEBPAGE\)](#)

Reinforced horticultural film
 Heavy duty 300 micron thickness



Code	Colour	Width x Length
POLW2.7	Natural	2.7m x per metre
POLW4	Natural	4m x per metre

Duracloche 110mu

[\(VIEW WEBPAGE\)](#)

Cloche Clear film
 110 micron thickness



Code	Colour	Width x Length
CLOCF1.9	Natural/Clear	1.9m x 100m on roll
CLOCF1.9/C	Natural/Clear	1.9m x per metre
CLOCF2.7	Natural/Clear	2.7m x 100m on roll
CLOCF2.7/C	Natural/Clear	2.7m x per metre

Tapes & Sealants

Batten tape

[\(VIEW WEBPAGE\)](#)

Double-sided foam tape retained by isolating battens onto the framework



Code	Colour	Width x Length on roll
BATT25	White	25mm x 25m
BATT48	White	48mm x 25m

All weather repair tape

[\(VIEW WEBPAGE\)](#)

Clear self-adhesive tape for the simple and quick patching of small tears



Code	Colour	Width x Length on roll
ALLW48	Clear	48mm x 25m
ALLW96	Clear	96mm x 25m

Patchbond repair tape

[\(VIEW WEBPAGE\)](#)

Permanent repair system for flexible membranes such as greenhouse films



Code	Colour	Width x Length on roll
PAT50-25	Clear	50mm x 25m
PAT150-25	Clear	150mm x 25mm

Polyguard hotspot tape

[\(VIEW WEBPAGE\)](#)

Self-adhesive white 100% polyester felt tape designed to provide a soft anti-abrasion layer



Code	Colour	Width x Length on roll
POL24	White	24mm x 50m
POL30	White	30mm x 50m
POL40	White	40mm x 50m
POL50	White	50mm x 50m
POL65	White	65mm x 50m
POL100	White	100mm x 50m

Gutter solvent cleaner

[\(VIEW WEBPAGE\)](#)

Cleaner dissolves grease and dirt, fast evaporation



Code	Colour	Bottle quantity
SILICONESOLVENT	Clear	1 Litre

Gutter silicone sealant

[\(VIEW WEBPAGE\)](#)

Used for the overlapping Redpath gutter design



Code	Colour	Tube quantity
SILICONEGREY	Grey	300ml

Polybelt strap

[\(VIEW WEBPAGE\)](#)

Tension webbing strap



Code	Colour	Width x Length roll
POLB25	White	25mm x 50m
POLB38	White	38mm x 50m

Roof retaining rope

[\(VIEW WEBPAGE\)](#)

8mm x 16 strand
 White round
 Polyester Rope



Code	Colour	Length on spool
ROP8100	White	100m

Aluminium Foil tape

[\(VIEW WEBPAGE\)](#)

To seal top edges of Polycarbonate



Code	Colour	Width x Length roll
TAPEAL25	Silver	25mm x 50m

Gutter Liner

Gutter liner

[\(VIEW WEBPAGE\)](#)

Rejuvenate deteriorating gutters and extend their useful service life



Code	Colour	Width x Length roll
GUTL	White	600mm x 100m

Fasteners, Brackets, Doors

Screws (various)

[\(VIEW WEBPAGE\)](#)



Code	Size
Steel Tek screws	
SCRS22	14# x22 Hex No Seal HWF
SCRS16HK	10gx16 Hex, 1000Hr Galvanised Neo M4.8 P1.5mm dk 12.5
SCRS22HK	10gx22 Hex, 1000Hr Galvanised Neo M4.8 P1.5 dk 12.5
SCRS35	12g-14x35 Hex Galvanised with Neo
SCRS45	12g-14x45 Hex Galvanised with Neo
SCRS65	12g-14x65 Hex Galvanised with Neo
Timber Tek screws	
SCRT25	12g-11x25 Hex Galvanised with Neo
SCRT35	12g-11x35 Hex Galvanised with Neo
SCRT45	12g-11x45 Hex Galvanised with Neo
SCRT65	12g-11x65 Hex Galvanised with Neo
Driver Bits	
SCRBS2	Screw No 2 Square 25mm
SCRBH	Tek 8mm (5/16") Hex Head 65mm shank
WaferHead Tek screws	
SCRW16S	10x16mm Square Dive Heavy Galvanised

Bolts, Nuts & Washers

[\(VIEW WEBPAGE\)](#)

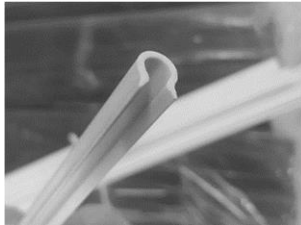


Code	Size & Length
BOL1025FBN	M10x25 Flanged bolt & flanged Nylock nut (15mm AF)
BOL1075FBN	M10x75 Flanged bolt & Flanged Nylock nut (15mm AF hex)
BOL1277FBN	M12x78 Flanged bolt (16 AF) & flanged nylock nut (18 AF hex)
WAS10EP	M10 Bonded EPDM washer Galvanised Round sealing
WAS10253RD	M10x24x3 Washer Heavy Galvanised Round
WAS12283RD	M12x28x3 Washer Heavy Galvanised Round

Omega Clips

[\(VIEW WEBPAGE\)](#)

Utilised for the semi-permanent retaining of films and fabrics onto wires or cables



Code	Colour	Size & Length
OMEGA3ASA	white	For 3.15mm wire x 1.5m
OMEGA6ASA	white	For 6mm wire x 1.5m
OMEGA7	white	For 7.5mm wire x 0.5m

Brackets (various)

[\(VIEW WEBPAGE\)](#)



Code	Size & Length
LBRACKET	L Bracket Large Galvanised Plate 60x40x2.5mm 5 Hole

Saddles (various)

[\(VIEW WEBPAGE\)](#)



Code	Size & Length
SAD33R	to fit 25nb pipe (33.6od) 2.5mm Galvanised
SAD60R	to fit 50nb pipe (60od) Hot dip Galvanised
SAD60R100	to fit 50nb pipe (60od) extended to 160mm deep
SAD257	25.5 x 25.5mm 45mm Long 7 holes
SAD32.5X59	32.5mm x 32.5 x 59mm

Ground screw anchors

[\(VIEW WEBPAGE\)](#)



Code	Size & Length
SCRA1M	1m x 16 x 130 Helix Galvanised
SCRA1.4M	1.4m x 20 x 175 Helix Galvanised

Doors, Tracks & Rollers

[\(VIEW WEBPAGE\)](#)



Code	Size & Length
DOOT5.8W	Commercial door track length 5.8m length
DOOT2.9W	Commercial door track 2.9m length
DOOWUA	Door 4 Wheel Complete Assembly Trolley & 28mm"U" Bracket
DOOR1.2S	Acrylic door 1.2 width x 2.110 height Complete Frame, panels, track & hardware
DOOR2.4M	Acrylic door 2.4 width x 2.110 height Complete Frame, panels, track & hardware
PROGDDRC	Polyweave door 1.250 width x 2.1 height Complete Frame, panels, track & hardware
DOORDR2.1X2.4	Polyweave Door 2.46 width x 2.114 height Complete Frame, panels, track & hardware

Bulkbags

[\(VIEW WEBPAGE\)](#)



Code	Colour	Width x Depth x Length
BULKBAG	White	1mWx 1mD x 1.5mH

Fabric & Textiles

Insulnet™ frost fabric

[\(VIEW WEBPAGE\)](#)

38 GSM Frost or thermal fabric



Code	Colour	Width x Length
INSUL2-50	Natural	2m x 50m

Biomesh™ insect mesh

[\(VIEW WEBPAGE\)](#)

Insect mesh 32 strands per square inch



Code	Colour	Width x Length
BIO3J	Natural/White	3m x 100m roll
BIO3C	Natural/White	3m x per metre
BIO5.2J	Natural/White	5.2m x 100m roll
BIO5.2C	Natural/White	5.2m x per metre
BIO5	Natural/White	5.5m x per metre

Weedshield™ Weedmat

[\(VIEW WEBPAGE\)](#)

Weedmat 105gsm woven groundcover

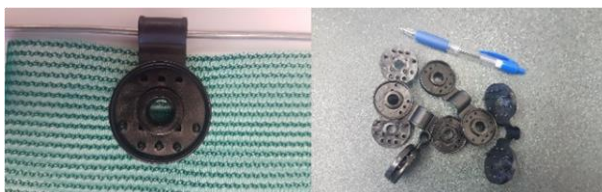
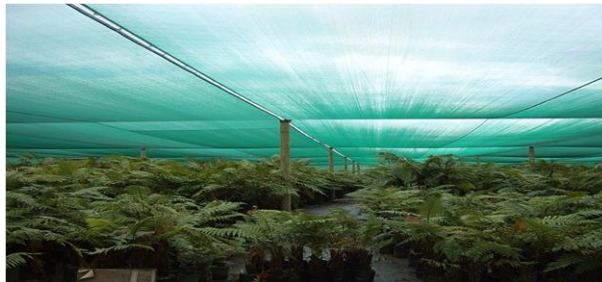


Code	Width x Length
Black Colour - with green lines	
WEE1.2	1.2m x 50m roll
WEE2	2m x 50m roll
WEE3.66	3.66m x 50m roll
WEE5.25	5.25m x 50m roll
Galvanised retaining staples	
WEES125	5" (130mm) Box 200
WEES225	9" (225mm) Box 200

Windbreak™ Shadecloth™

[\(VIEW webpage WINDBREAK\)](#)

[\(SEE webpage SHADECLOTH\)](#)



Code	Colour	Size
Light grade 25/30%		
SHWL1	Green/Black	0.97m x 50m
SHWL1/C		0.97m x per metre
SHWL2	Green/Black	2m x 50m
SHWL2/C		2m x per metre
SHWL4	Green/Black	4m x 50m
SHWL4/C		4m x per metre
SHWL3W	White	3m x 50m
SHWL3W/C		3m x per metre
SHWL6W	White	6m x 50m
SHWL6W/C		6m x per metre
Medium grade 45/50%		
SHWM1	Green/Black	0.97m x 50m
SHWM1/C		0.97m x per metre
SHWM2	Green/Black	2m x 50m
SHWM2/C		2m x per metre
SHWM4	Green/Black	4m x 50m
SHWM4/C		4m x per metre
SHWM6	Green/Black	6m x 50m
SHWM6/C		6m x per metre
Retaining Clips		
SHACR50	Black	Round (Bag of 50)
SHACR100	Black	Round (Bag of 100)
SHACR200	Black	Round (Bag of 200)
SHACR500	Black	Round (Bag of 500)
SHACR1000	Black	Round (Bag of 1000)
SHACR2000	Black	Round (Bag of 2000)

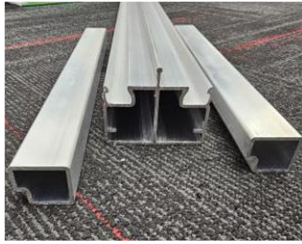
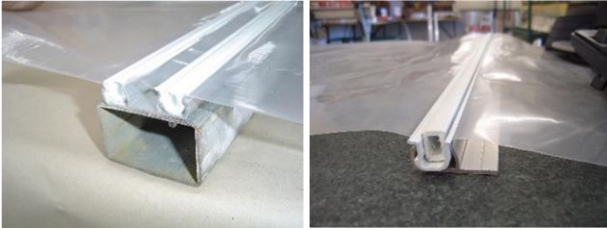
Clipping fastening systems

Duralock2® Alloy & UPVC

[\(VIEW WEBPAGE\)](#)

Film/Fabric holding system include alloy base, channel insert & lock bead. Easy on the cladding & simple to use. complete 3 Piece includes Base, channel insert, bead

Unirail used for base rails, top rails, mid rails

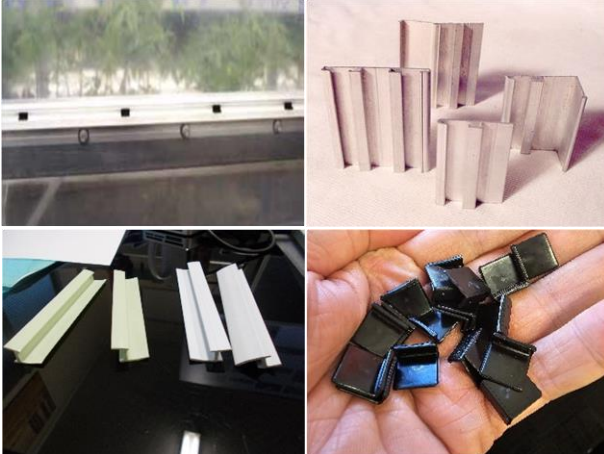


Code	Length	Description
DUR2SCL	4.5m	Single groove 3 Piece Longleg complete
DUR2SCS	4.5m	Single groove 3 Piece Shortleg complete
DUR2TCL	4.5m	Twin groove 3 Piece Longleg complete
DUR2TCS	4.5m	Twin groove 3 Piece Shortleg complete
DUR2ICL1.5	1.5m	Channel insert & lock bead Longleg UPVC
DUR2ICLS1.5	1.5m	Channel insert&lock bead Shortleg UPVC
DUR2SB4.5	4.5m	Single groove base only Alloy
DUR2TB4.5	4.5m	Twin groove base only Alloy
DUR2IC1.5	1.5m	Channel insert only UPVC
DUR2LBL1.5	1.5m	Lock bead only Longleg UPVC
DUR2LBS2.25	2.25m	Lock bead only Shortleg UPVC
DUR2R5.7U	5699mm	Uni Upstand Rail Twin Groove Alloy
SLED2300U	300mm	Duralock 2 Sleeve

Lockstrip Alloy & UPVC

[\(VIEW WEBPAGE\)](#)

Film/Fabric holding system parts use an alloy base, UPVC insert & clips. Easy on the cladding



Code	Length	Description
LOCSC	4.5m	Single groove 3 Piece Longleg complete
LOCSCS	4.5m	Single groove 3 Piece Shortleg complete
LOCTC	4.5m	Twin groove 3 Piece Longleg complete
LOCTCS	4.5m	Twin groove 3 Piece Shortleg complete
LOCILC	1.5m	Insert Including clips Longleg UPVC
LOCISC	1.5m	Insert Including clips Shortleg UPVC
LOCSB4.5	4.5m	Single groove base only Alloy
LOCTB4.5	4.5m	Twin groove base only Alloy
LOCIL1.5	1.5m	Insert only Longleg UPVC
LOCIS1.5	1.5m	Insert only Shortleg UPVC
LOCCLPEA		Clips each
LOCCLP		Clips bag of 100
LOCCLP1000		Clips bag of 1000

Lok-Clip - Alloy & UPVC

[\(VIEW WEBPAGE\)](#)

TaylorBuilt / Harford two piece film/fabric holding system. Parts use Alloy base and a top cap made from either Alloy or UPVC



Code	Length	Description
LOKCLIPBT	4.5m	Twin groove base only Alloy
LOKCLIPBS	4.5m	Single groove base only Alloy
LOKCLIPL	3m	Insert Singleskin Longleg UPVC
LOKCLIPS	3m	Insert Twinskin Shortleg UPVC
LOKCLIPA	3m	Insert Twinskin Shortleg Alloy
LOKCLIPAF	Roll	Film filler 145/150mm x 50m

One piece "A leg"

[\(VIEW WEBPAGE\)](#)

UPVC used for in specialist locations only and fits into Lockstrip alloy base or the old Floralink greenhouse system clip design



Code	Length	Description
LOCIA3.4	3.4m	Insert clip UPVC

F-Link alloy insert

[\(VIEW WEBPAGE\)](#)

Used for in specialist locations only and fits into Lockstrip alloy base or the old Floralink greenhouse system clip design



Code	Length	Description
LOCIA3.4AL	3.4m	Insert clip Alloy

V lock

[\(VIEW WEBPAGE\)](#)

UPVC fits Redpath domestic tunnelhouses from November 2023 singleskin only Fits into the lockstrip aluminium base

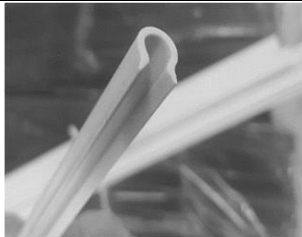


Code	Length	Description
LOCID60POM	60mm	Lockstrip POM White

Wire omega cable clip

[\(VIEW WEBPAGE\)](#)

UPVC utilised for the semi-permanent retaining of films and fabrics onto wires or cables



Code	Length	Description
OMEGA3ASA	1.5m	Fits to 3.15mm wire
OMEGA6ASA	1.5m	Fits to 6mm wire
OMEGA7	0.5m	Fits to 7.5mm wire

Roof battens

[\(VIEW WEBPAGE\)](#)

Used to secure the roof cladding onto the ridges & rafters greenhouses



Code	Length	Description
BAT4	4m	Aluminium base only
BAT4T	4m	Aluminium base with tape

Ventilation

Roof Ventilation

[\(VIEW WEBPAGE\)](#)



Code	Description
RAC1.65	Rack & Pinion Straight Steel 1.646m
VENTT	Swaged torque tube 25nb x 2.6mm x 5.85m
VENTTBW	Torque Tube 1"Nylon&steel ball Bearing
VENTTBWL	Torque Tube "L" 1" Nylon & steel ball Bearing
VENMANC	Gearbox 32:1 Manual Complete
GRE450F	Grease Food grade Super Red 450gm

Auto sidewall ventilation

[\(VIEW WEBPAGE\)](#)



Code	Description
AUTWMC	24volt Motor & Coupling includes limit switch
AUTWMG	Motor WSM6035 Adapter & Round Roller Guide Assembled
AUTWMC2	Controller for up to 2 Roll Up Wall motors
AUTPB	Power Supply Box 5 amp 24V AC/DC Input 24VDC Output

Manual sidewall ventilation

[\(VIEW WEBPAGE\)](#)



Code	Description
EZIW4:1	Eziwinder Roll Up hand Winch 4:1 with grey adapter
EZIW4:1HD	Eziwinder Roll Up hand Winch 4:1HD with adapter for 25m+ length buildings
EZIGT25.4	Eziwinder RollUp GuideTube3.8m plug1 end
EZIGTS	Eziwinder Guide Tube Bracket HDG
ROLUWTH	25nb x 2.6mm x 5.85m Swaged 1 end
POLCLB	Polyclamp Black 87mm for Roll up pipe

Environmental control

[\(VIEW WEBPAGE\)](#)



Code	Description
CONAB3	Contacting Reversing Starter Unit 3ph 1.0-1.6A
CONAC	Controller Aktiva R series Base Unit
CONAHS	Humidity Sensor
CONARS	Rain Sensor
CONATS	Temperature Sensor
CONAWS	Wind Speed Sensor ANEMOMETER
CONAWV	Wind Vane simple

Twinskin equipment

[\(VIEW WEBPAGE\)](#)



Code	Description
INFBC	Inflation Polyfan2 Unit IF160 with case
INF90C	Twinskin fan Single outlet 230V Blower only with 1x cone
INF160C	Inflation fan Double outlet 230V Blower only with 2x cones
INFAPF	Air Pipe Flange to fit 65mm air pipe White two piece
INFAP	Air Transfer Pipe 65mm ribbed per metre
INFAP30	Air Transfer Pipe 65mm x 30m coil
INFMANOMETERC	U Gauge Manometer Stainless Steel Twinskin Inflation Pressure Complete

Cool / Stirrer fans

Vortex air stirring fan

[\(VIEW WEBPAGE\)](#)



Code	Description
VORFAN4	450mm Stainless Steel 240v/50Hz 370w 910 rpm Label, 4 eyes + chain

Extraction greenhouse fans

[\(VIEW WEBPAGE\)](#)



Code	Description
FANDJF750	DJF 750mm 1 phase complete
FAN50SOR3	50 inch 3-Phase complete with mesh + louvres
TSTAT-T15	Thermostat -5 to 35C Multifan T-15

Factory & Office address
 16 Bounty Place
 Kelvin Grove
 Palmerston North 4414
 New Zealand



Postal address
 PO Box 9058
 Terrace End
 Palmerston North 4441
 New Zealand

Kerilea cloche system

Home Cloche & Commercial Cloche Systems

[\(VIEW WEBPAGE\)](#)



Code	Pack Size	Frame Size Above Ground
CLOC6G4	4m length	600mm x 650mm
CLOC6G10	10m length	frames, bungee, film
CLOC6/10	10 pack	600mm x 650mm
CLOC6/25	25 pack	Frames & Bungee
CLOC8/10	10 pack	800mm x 600mm
CLOC8/25	25 pack	Frames & Clips
CLOC1/10	10 pack	1m x 550mm
CLOC1/25	25 pack	Frames & Clips
CLOC1H/10	10 pack	1m x 1m
CLOC1H/25	25 pack	Frames & Clips
CLOC1.25/10	10 pack	1.25m x 900mm
CLOC1.25/25	25 pack	Frames & Clips
CLOC1.5/10	10 pack	1.5m x 800mm
CLOC1.5/25	25 pack	Frames & Clips
CLOCF1.9	100m roll	Duracloche clear film, 110mu
CLOCF1.9/C	Per metre	2% UVI
CLOCF2.7	100m roll	Duracloche clear film, 110mu
CLOCF2.7/C	Per metre	2% UVI
CLOCBS	Each	7.5mm bungee Cord 1050mm

Steel & Aluminium profiles

Steel

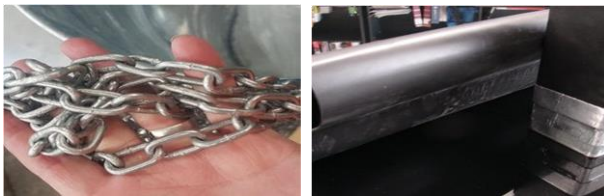
[\(VIEW WEBPAGE\)](#)



Code	Size
25NB2.65.75S	25nbx2.6 Swaged 1 end 33.5 +/-0.5 OD HD Galvanised Pipe Length 5.85m
50NBSGP	50nbx2.3 Swaged 1 End 60.3od HD Galvanised Pipe Length 5.86m
65651.65.85S	65x65x1.6 swaged Length 5.850m
75502.56.625HK	75x50x2.5 Length 6.625m

Chain & Heat shrink

[\(VIEW WEBPAGE\)](#)



Code	Description
CROC4M	Chain 26mm x 16mm x 4mm per metre
HEA115/35-1.5	Heat Shrink 115/35 1.5m Length
HEA160/50-1.5	Heat Shrink 160/50 1.5m Length

Aluminium Extrusions (various)

[\(VIEW WEBPAGE\)](#)

Angle profile



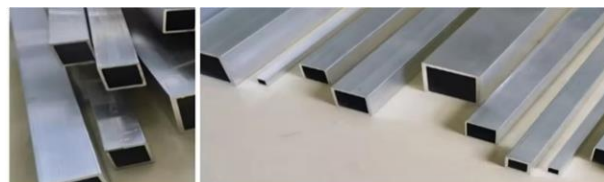
Code	Length	Size xx Thickness
ALUA2520	2.5m/5m	25mm x 20mm x 1.6mm
ALUA3030	2.5m/5m	30mm x 30mm x 3mm
ALUA5050	2.5m/5m	50.1mm x 50.1mm x 3mm
ALUA5075	2.5m/5m	50mm x 75mm x 3mm
ALUA12040	2.5m/5m	120mm x 40mm x 3mm

Round profile



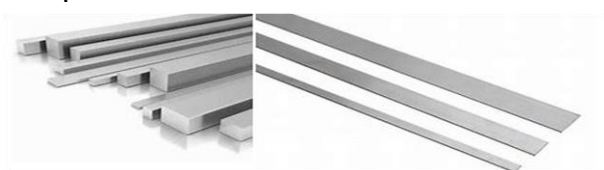
Code	Length	Size xx Thickness
ALUR12.7	2.5m or 5m	12.7mm x 1mm
ALUR20	2.5m or 5m	20mm x 2mm
ALUR32	2.5m or 5m	32mm x 1.6mm
ALUR50	2.5m or 5m	50mm x 5mm

Square profile



Code	Length	Size xx Thickness
ALUS21.8X21.8	2.93/5.86m	21.8mm x 21.8mm x 1.2mm
ALUS25255.86	2.93/5.85m	25mm x 25mm x 1.4mm
ALUS4040	2.5m or 5m	40mm x 40mm x 2mm
ALUS5050	2.5m or 5m	50mm x 50mm x 3mm

Flat profile



Code	Length	Width x Thickness
ALUF30	2.5m or 5m	30mm x 2mm
ALUF50	2.5m or 5m	50mm x 5mm
ALUF75	2.5m or 5m	75mm x 3mm
ALUF100	2.5m or 5m	100mm x 2mm

Pine raised gardens

Box only gardens

[\(VIEW WEBPAGE\)](#)

Includes Timber, brackets & screws



Code	Height	Liner Code x Qty	Liner Nails NAILS25X2.5
Size 0.75m wide x 1.4m long box only			
RAIGP.75X1.4X.15	0.15m	RAIGL150 x 5m	x20
RAIGP.75X1.4X.30	0.30m	RAIGL300 x 5m	x20
RAIGP.75X1.4X.45	0.45m	RAIGL450 x 5m	x20
RAIGP.75X1.4X.60	0.60m	RAIGL600 x 5m	x20
RAIGP.75X1.4X.75	0.75m	RAIGL750 x 5m	x20
RAIGP.75X1.4X.90	0.90m	RAIGL900 x 5m	x20
Size 0.75m wide x 2.8m long box only			
RAIGP.75X2.8X.15	0.15m	RAIGL150 x 8m	x30
RAIGP.75X2.8X.30	0.30m	RAIGL300 x 8m	x30
RAIGP.75X2.8X.45	0.45m	RAIGL450 x 8m	x30
RAIGP.75X2.8X.60	0.60m	RAIGL600 x 8m	x30
RAIGP.75X2.8X.75	0.75m	RAIGL750 x 8m	x30
RAIGP.75X2.8X.90	0.90m	RAIGL900 x 8m	x30
Size 0.75m wide x 4.4m long box only			
RAIGP.75X4.4X.15	0.15m	RAIGL150 x 11m	x33
RAIGP.75X4.4X.30	0.30m	RAIGL300 x 11m	x33
RAIGP.75X4.4X.45	0.45m	RAIGL450 x 11m	x33
RAIGP.75X4.4X.60	0.60m	RAIGL600 x 11m	x33
RAIGP.75X4.4X.75	0.75m	RAIGL750 x 11m	x33
RAIGP.75X4.4X.90	0.90m	RAIGL900 x 11m	x33
Size 0.98m wide x 0.9m long box only			
RAIGP.98X.90X.15	0.15m	RAIGL150 x 4m	x16
RAIGP.98X.90X.30	0.30m	RAIGL300 x 4m	x16
RAIGP.98X.90X.45	0.45m	RAIGL450 x 4m	x16
RAIGP.98X.90X.60	0.60m	RAIGL600 x 4m	x16
RAIGP.98X.90X.75	0.75m	RAIGL750 x 4m	x16
RAIGP.98X.90X.90	0.90m	RAIGL900 x 4m	x16
Size 0.98m wide x 1.8m long box only			
RAIGP.98X1.8X.15	0.15m	RAIGL150 x 6m	x22
RAIGP.98X1.8X.30	0.30m	RAIGL300 x 6m	x22
RAIGP.98X1.8X.45	0.45m	RAIGL450 x 6m	x22
RAIGP.98X1.8X.60	0.60m	RAIGL600 x 6m	x22
RAIGP.98X1.8X.75	0.75m	RAIGL750 x 6m	x22
RAIGP.98X1.8X.90	0.90m	RAIGL900 x 6m	x22

Box only gardens

[\(VIEW WEBPAGE\)](#)

Includes Timber, brackets & screws



Code	Height	Liner Code x Qty	Liner Nails NAILS25X2.5
Size 0.98m wide x 3m long box only			
RAIGP.98X3X.15	0.15m	RAIGL150 x 8m	x30
RAIGP.98X3X.30	0.30m	RAIGL300 x 8m	x30
RAIGP.98X3X.45	0.45m	RAIGL450 x 8m	x30
RAIGP.98X3X.60	0.60m	RAIGL600 x 8m	x30
RAIGP.98X3X.75	0.75m	RAIGL750 x 8m	x30
RAIGP.98X3X.90	0.90m	RAIGL900 x 8m	x30

Complete with cloche

[\(SEE WEBPAGE\)](#)

Includes Timber, Cloche frames, bungee cord, brackets & screws



Code	Height	Liner Code x Qty	Liner Nails NAILS25X2.5
Size 0.98m wide x 0.9m long complete with cloche			
RAIGCP.98X.90X.15	0.15m	RAIGL150 x 4m	x16
RAIGPC.98X.90X.30	0.30m	RAIGL300x 4m	x16
RAIGPC.98X.90X.45	0.45m	RAIGL450x 4m	x16
RAIGPC.98X.90X.60	0.60m	RAIGL600x 4m	x16
RAIGPC.98X.90X.75	0.75m	RAIGL750 x 4m	x16
RAIGPC.98X.90X.90	0.90m	RAIGL900x 4m	x16
Size 0.98m wide x 1.8m long complete with cloche			
RAIGPC.98X1.8X.15	0.15m	RAIGL150 x 6m	x22
RAIGPC.98X1.8X.30	0.30m	RAIGL300 x 6m	x22
RAIGPC.98X1.8X.45	0.45m	RAIGL450x 6m	x22
RAIGPC.98X1.8X.60	0.60m	RAIGL600 x 6m	x22
RAIGPC.98X1.8X.75	0.75m	RAIGL750 x 6m	x22
RAIGPC.98X1.8X.90	0.90m	RAIGL900 x 6m	x22
Size 0.98m wide x 3m long complete with cloche			
RAIGPC.98X3X.15	0.15m	RAIGL150 x 8m	x30
RAIGPC.98X3X.30	0.30m	RAIGL300 x 8m	x30
RAIGPC.98X3X.45	0.45m	RAIGL450 x 8m	x30
RAIGPC.98X3X.60	0.60m	RAIGL600 x 8m	x30
RAIGPC.98X3X.75	0.75m	RAIGL750 x 8m	x30
RAIGPC.98X3X.90	0.90m	RAIGL900 x 8m	x30

Staging shelves

Staging shelves

[\(VIEW WEBPAGE\)](#)



Code	Description
DOMSHEL1.0	2 tiered shelf 1m width 400mm deep
DOMSHEL1.5	2 tiered shelf 1.5m width 400mm deep
DOMSHEL1.0H	3 tiered shelf 1m width 400mm deep
DOMSHEL1.5H	3 tiered shelf 1.5m width 400mm deep

Home domestic house range

Home Glasshouses

[\(VIEW WEBPAGE\)](#)



Code	Glass type	Size
GLAS2.56C	Clear 3mm	Urban Single Door
GLAS2.56C4M	Clear 4mm	1.92m x 2.56m
GLAS3.2C	Clear 3mm	Urban Single Door
GLAS3.2C4M	Clear 4mm	1.92m x 3.2m
GLAS3.8SDC	Clear 3mm	Statesman Single Door
GLAS3.8SDC4M	Clear 4mm	2.57m x 3.804m
GLAS3.8DDC	Clear 3mm	Statesman Double Door
GLAS3.8DDC4M	Clear 4mm	2.57m x 3.804m
GLAS5.04SDC	Clear 3mm	Statesman Single Door
GLAS5.04SDC4M	Clear 4mm	2.57m x 5.04m
GLAS5.04DDC	Clear 3mm	Statesman Double Door
GLAS5.04DDC4M	Clear 4mm	2.57m x 5.04m
GLAS5.66DDC4M	Clear 4mm	BEAST Double Door 3.2m x 5.66m

Home Polycarbonate houses

[\(VIEW WEBPAGE\)](#)

6mm Polycarbonate sheets in Sides, Ends, roof



Code	Size
POLC2.56C	Urban Single Door 1.92m x 2.56m
POLC3.2C	Urban Single Door 1.92m x 3.2m
POLC3.8SDC	Statesman Single Door 2.57m x 3.804m
POLC3.8DDC	Statesman Double Door 2.57m x 3.804m
POLC5.04SDC	Statesman Single Door 2.57m x 5.04m
POLC5.04DDC	Statesman Double Door 2.57m x 5.04m
POLC5.66DDC	BEAST Double Door 3.2m x 5.66m

Home Polycarbonate-Glass houses

[\(VIEW WEBPAGE\)](#)

All Polycarbonate-Glass buildings have 6mm Polycarbonate sheets in Sides and Ends with 4mm Glass in the roof



Code	Size
POLCG2.56C	Urban Single Door 1.92m x 2.56m
POLCG3.2C	Urban Single Door 1.92m x 3.2m
POLCG3.8SDC	Statesman Single Door 2.57m x 3.804m
POLCG3.8DDC	Statesman Double Door 2.57m x 3.804m
POLCG5.04SDC	Statesman Single Door 2.57m x 5.04m
POLCG5.04DDC	Statesman Double Door 2.57m x 5.04m
POLCG5.66DDC	BEAST Double Door 3.2m x 5.66m

Home Glass/-Polycarbonate Accessories

[\(VIEW WEBPAGE\)](#)

Summertime Shade Throw-over
 Includes Shadecloth, Rope, Saddles, Screws



Code	Shadecloth size
GLASCT50SHW2.56	6m width x 2.6m length
GLASCT50SHW3.2	6m width x 3.2m length
GLASCT50SHW3.8	6m width x 3.8m length
GLASCT50SHW5.04	6m width x 5m length
GLASCT50SHW6.3	6m width x 7m length



Code	Description
GLASAV	Bayliss Autovent Opener unit
GLALC	Louvre 5 Blade Vent with 4mm glass
POLLC	Louvre 5 Blade Vent with Polycarbonate
GLASHELF1.8	Diamond Shelving 3 slat, 1.8m long
GLASHELF2.5	Diamond Shelving 3 slat, 2.5m long
GLARV	Roof Vent (no glass required)

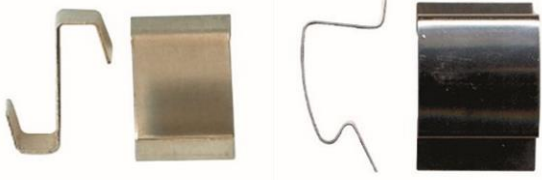





TAPEAL25	Aluminium Foil Tape 40mu - 25mm x 50m
GLAWIRE50	Wire clips, stainless steel butterfly Pack of 50



Home Glass/-Polycarbonate Accessories

[\(VIEW WEBPAGE\)](#)

		Code	Description
		GLAOLA50	Overlap Clips Aluminium pack of 50
		GLASSC50	Spring clips C stainless steel pack of 50
		GLACHB11.50	Cropped Head 6dia x 11mm Bolt & Nut Pkt 50
		GLACHB22.50	Cropped Head 6dia x 22mm Bolt & Nut Pkt 50
		GLADLS	Lock Bracket only for Single Door
		GLADLD	Lock Brackets only for Double Door
		GLADR	Door Rollers Kit
		GLACRO6	Crop support
		GLANEO15.2	Neoprene glazing gasket 15.2m coil

Home Tunnelhouses

[\(VIEW WEBPAGE\)](#)

2.36m wide includes
 base rails
 Single front door



Length	Features also include
3m	1x door, 1x louvre
4.5m	1x door, 1x louvre
6m	1x door, 1x louvre, 1 roof vent
7.5m	1x door, 1x louvre, 1 roof vent
9m	1x door, 1x louvre, 1 roof vent
10.5m	1x door, 1x louvre, 1 roof vent
12m	1x door, 1x louvre, 1 roof vent
15m	Door each end, 3 roof vents, extra wind brace kit
18m	Door each end, 3 roof vents, extra wind brace kit
21m	Door each end, 3 roof vents, extra wind brace kit
24m	Door each end, 3 roof vents, extra wind brace kit

Home Shadehouses

[\(VIEW WEBPAGE\)](#)

2.36m wide includes
 base rails,
 Single front door,
 Closed rear end



Length	Features also include
3m	1x door
4.5m	1x door
6m	1x door
7.5m	1x door
9m	1x door
10.5m	1x door
12m	1x door
15m	1x door, extra wind brace kit
18m	1x door, extra wind brace kit
21m	1x door, extra wind brace kit
24m	1x door, extra wind brace kit

Home Polyshadehouse

[\(VIEW WEBPAGE\)](#)

2.36m wide includes
 base rails,
 Single front door,
 Closed rear end



Length	Features also include
3m	1x door
4.5m	1x door
6m	1x door, 1 roof vent
7.5m	1x door, 1 roof vent
9m	1x door, 1 roof vent
10.5m	1x door, 1 roof vent
12m	1x door, 1 roof vent
15m	Door both ends, 3 roof vents, extra wind brace kit
18m	Door both ends, 3 roof vents, extra wind brace kit
21m	Door both ends, 3 roof vents, extra wind brace kit
24m	Door both ends, 3 roof vents, extra wind brace kit

Domestic accessories

[\(VIEW WEBPAGE\)](#)



Code	Description
DOMVENTC	Manual Roof Vent Complete
DOMAVC	Bayliss Autovent Opener with Bracket
DOMLB-PCC	Polycarbonate 3 Blade louvre for End wall
DOMLBCS	Polycarbonate 3 Blade louvre for Side wall

Domestic accessories

[\(VIEW WEBPAGE\)](#)



Throwover includes: Shadecloth cover, Rope, Saddles, Screws



"X" wind - Extreme Wind kit



Crop support rail addition



Code	Description
DOMSHRWE	Rear wall shelf 2235mm
DOMSH3	Shelf 2970mm
DOMSH4.5	Shelf 4470mm
DOMSH6	Shelf 5970mm
DOMCT50SHW1.5	Cover size 6m width x 1.5m Length
DOMCT50SHW3	Cover size 6m width x 3m Length
DOMCT50SHW4.5	Cover size 6m width x 4.5m Length
DOMCT50SHW6	Cover size 6m width x 6m Length
DOMCT50SHW7.5	Cover size 6m width x 7.5m Length
DOMCT50SHW9	Cover size 6m width x 9m Length
DOMCT50SHW10.5	Cover size 6m width x 10.5m Length
DOMCT50SHW12	Cover size 6m width x 12m Length
DOMCT50SHW15	Cover size 6m width x 15m Length
DOMCT50SHW18	Cover size 6m width x 18m Length
DOMCT50SHW21	Cover size 6m width x 21m Length
DOMCT50SHW24	Cover size 6m width x 24m Length
DOMHWKX3	3m Length
DOMHWKX4.5	4.5m Length
DOMHWKX6	6m Length
DOMHWKX7.5	7.5m Length
DOMHWKX9	9m Length
DOMHWKX10.5	10.5m Length
DOMHWKX12	12m Length
DOMCSR3	3m Length
DOMCSR4.5	4.5m Length
DOMCSR6	6m Length
DOMCSR7.5	7.5m Length
DOMCSR9	9m Length
DOMCSR10.5	10.5m Length
DOMCSR12	12m Length
DOMCSR15	15m Length
DOMCSR18	18m Length
DOMCSR21	21m Length
DOMCSR24	24m Length

Semi Commercial buildings

Lifestylers greenhouses

[\(VIEW WEBPAGE\)](#)

6m wide Includes 1x front Polyweave 1.2m wide door , 1x Closed rear end



Optional extras

Long life singleskin or twinskin (1ph power required) Duratough 215 micron

Ridge vent optional - Single / Double, Manual / Auto

roll-up side(s) optional

Front door optional Upgrade to either

- Polyweave 1.5m width
- Clear acrylic either 1.2m or 1.5m width
- Dual (Polyweave/White shade) (each 1.2m opening)

Rear door optional

- Polyweave 1.2m or 1.5m width
- Clear acrylic either 1.2m or 1.5m width
- Dual (Polyweave/White shade) (each 1.2m opening)

Crop support rail optional

Sidewall(s) shelf optional

Quick build Tunnelhouses

[\(VIEW WEBPAGE\)](#)

6m wide Long life singleskin Duratough 215 micron cladding, 2x open ends



Optional extras

Hi-wind kit

Closed or door end wall

Manual roll up wall

Automatic roll up wall

Spare ground screw anchors

Extra roof retaining rope

Quick build Calf shelters

[\(VIEW WEBPAGE\)](#)

6m wide Long life singleskin Duratough 215 micron cladding, 2x open ends



Optional extras

Hi-wind kit

Closed or door end wall

Manual roll up wall

Header rail

Spare ground screw anchors

Extra roof retaining rope

Commercial buildings

Vented roof designs

[\(VIEW WEBPAGE\)](#)



Top of the line greenhouse models from Redpath. They are fully NZ building code compliant design engineered structures, utilising strong RHS steel, HDG poles, 12mm fully bolted 4mm plate connections, and cold rolled 'walk-through' wide steel gutters as standard.

These greenhouses are used for year-round production of vegetables, flowers and nursery crops that require accurate environmental control. These designs may be twinskin or singleskin clad with Duratough 215 micron film. The cosecant rafter "A" frame truss design is a unique Redpath feature and it allows superior light transmission through to the crop via reduced overhead structural shading.

Arch roof designs

[\(VIEW WEBPAGE\)](#)



Redpath arch tunnel greenhouse spans are supplied in 6m, 8m or 9.6m widths. Used for seasonal vegetables, flowers & crop etc. Lengths can be anything from 12m through to 150m or more. These designs are popular for shoulder-season crops, nursery crops, berries, fruits, vegetables and flower crops that require protection from the outside environment.

Quick build shadehouse

[\(VIEW WEBPAGE\)](#)



Our popular Quickbuild Shadehouse are a cost-effective and a simple to build "sleeve-connected" all steel frame design.

The kit include all overhead steel framework, steel poles, exterior bracing poles, shade cloth, cloth clamping systems, brackets, cables, bolts, fasteners & tensioners to complete the building. We supply nationwide and export throughout the Pacific. Popular with Nurseries, Councils, Lifestylers, Landscapers, Garden Centres, Native tree propagators, Berry Producers, Commercial croppers etc.

Arch or Truss Shadehouse

[\(VIEW WEBPAGE\)](#)



The Redpath arch or truss shadehouse designs are another option to the more cost-effective flat roof shadehouse designs.

The arch or truss roofed shadehouses therefore offer a more permanent design option, improved overhead clearance and a fully design engineered solution that may also be converted to a poly clad greenhouse at some later date. Multiple spans available and may be inter-connected side by side for a multi span layout. Lengths can be anything from 12m through to 150m or more. Supplied with 50% knitted shade cloth cladding or other grades of shade cloth or Insect screening to suit your needs.

Quarantine Structures

[\(VIEW WEBPAGE\)](#)



The level of quarantine required differs from facility to facility and therefore Redpath use the flexibility of our full buildings range to come up with a solution. Both natural and forced air fan ventilation systems are an option, as are internal partition walls, internal doors, double annex door entrances, specialty sealing of the frame and cladding from the outside environment. Singleskin or Twinskin Duratough 215 micron Greenhouse film is used, or alternatively there is a white shaded roofing option using Durashade, Duraflex or White canvas Biomesh level 2 quarantine mesh is often used within our designs for any openings, exhausts, annex, anti-rooms etc.

Medicinal Marijuana Hemp

[\(VIEW WEBPAGE\)](#)



Redpath manufacture, distribute and install our range of commercial crop greenhouses from its factories based in New Zealand and Australia.

Medicinal cannabis or marijuana where legal and authorized to grow can achieve substantially improved production levels when grown under controlled environmental conditions.

Redpath use and recommend Duratough greenhouse film for this growing of medicinal marijuana as it has a high P.A.R (Photosynthetic Active radiation) transmittance level.

Sports shelter

Golf Driving Range Shelter

[\(VIEW WEBPAGE\)](#)



Redpath Golf Shelters provide a natural light rain-proof practice area and they use Redpaths specialist clear long life roof claddings of clear coloured Duratough or white coloured Duraflex or Canvas options. Redpath Golf shelters are fully engineered for long life and reliable performance. Redpath can quote a constructed price nationwide or the Golf Shelters or they may be purchased in kitset form only.

Cricket Training Facilities

[\(VIEW WEBPAGE\)](#)



Redpaths specialist Duratough heavy duty long life clear roof cladding allows PAR (photosynthetic active radiation) light to travel through the cladding which in-turn allows natural grass pitches to be grown within the shelter if required. Artificial turf is also a common use within the Redpath cricket shelters. Natural light provides life-like conditions for bowlers and batsmen to practice.

Industrial

Garden centre

[\(VIEW WEBPAGE\)](#)



These buildings provide a warm, dry and well-lit browsing experience for customers. Aesthetics are just as important to the shoppers experience' and the Redpath designs offer a clean uncluttered overhead appearance with reduced bird perching points. Many different choices of roof cladding are available.

Industrial

[\(VIEW WEBPAGE\)](#)



Redpath industrial shelters are used as a permanent type shelter for general storage or to protect / operate workplace equipment. Redpath have supplied these shelters for housing steel storage, timber drying, firewood protection, car-yards, garden centres, pools, playgrounds, entertainment areas, boat or caravan shedding and drying facilities etc.

Retail

[\(VIEW WEBPAGE\)](#)



Redpath industrial shelters are used as a permanent type shelter for general storage or to protect / operate workplace equipment. Redpath have supplied these shelters for housing steel storage, timber drying, firewood protection, car-yards, garden centres, pools, playgrounds, entertainment areas, boat or caravan shedding and drying facilities etc.

Dairy & Animal housing

Dairyshelters™

[\(VIEW WEBPAGE\)](#)



Built nationwide Redpath designs of clear or white shaded roofed dairy housing shelters offer an efficient shelter system for NZ farmers. From Clear, White, Canvas, Tin or clear panel roof options. Built nationwide Redpath designs of clear or white shaded roofed dairy housing shelters offer an efficient shelter system for NZ farmers. They are fully NZ building code compliant design engineered structures that utilise strong RHS steel with long-life coatings, 12mm fully bolted 4mm plate connections, and cold rolled 'walk-through' wide steel gutters.

Animal housing

[\(VIEW WEBPAGE\)](#)



Redpath shelters offer protection for a variety of animals and Organisms. Used for Aquaculture, Goats, Pigs, Poultry, Seafood and many other applications. The warm dry environment produced by the clear or white shading roofing provides a natural and sheltered environment. Redpath pay special attention to the corrosion resistance of the poles and framing for their animal sheds. A range of spans is available for this application, from 6m wide right through to 15m clear spans. Roll up wall blinds and roof ventilation systems with fully automated or manual control are optional for ventilation throughout the season, or alternatively an extraction fan system may be easily fitted. Overhead shadescreen systems are another popular choice for protection of the animals or organisms.

Redpath operates 16 construction teams, we manage the building permit application and can help with resource consents if they arise. We then build on your site using local builders that then continue to offer local after sales service. Redpath have supplied and erected 1000s of these designs throughout our nearly 40 year history.

Animal Shade Shelters

[\(VIEW WEBPAGE\)](#)



Used to shelter from the sun, Dairy herds, Beef, Goats etc, we supply them in a range of modular sizes to suit the individual needs. Our design includes simple slide-together connectors for quick and secure assembly of the main frame. Only basic tools and skills are needed to erect the building. The Redpath Shadehouses give owners speedier build times, improved durability and affordability over more traditional timber pole/wire & clip designs.

Aquaculture housing

[\(VIEW WEBPAGE\)](#)



Redpath Aquaculture shelters with roofing type can be clear open UV for seaweed, algae growth or white shaded to reduce UV stress for shellfish etc. Redpath Aquaculture shelters provide a natural environment for quality and consistent fish farming production. Redpath pay special attention to the corrosion resistance of the poles and framing and can also up-spec the building for even greater resistance to saltwater environments. A range of spans is available for this application, from 6m wide right through to 15m clear spans.

Calf shelters

[\(VIEW Permanent type WEBPAGE\)](#)

[\(VIEW Quick-build budget WEBPAGE\)](#)



The Redpath permanent type calf shelters are fully engineered and designed for long service life. Built nationwide – Redpath permanent calf shelters are fully NZ building code compliant with design engineering that utilise strong RHS steel with long-life coatings, 12mm fully bolted 4mm plate connections, and cold rolled 'walk-through' wide steel gutters. The gutters are standard on all pole lines (including the exterior walls).



Redpath Quick-build budget calf rearing shelters are a simple and durable solution to providing a warm natural light environment to raise healthy happy calves. We have supplied hundreds of these shelters nationwide to happy customers. This design is straightforward to build in 6m width. They are typically erected by local fencing contractors, handyman or owners within a few days usually by two persons (depending on the size).

Factory & Office address
16 Bounty Place
Kelvin Grove
Palmerston North 4414
New Zealand



Postal address
PO Box 9058
Terrace End
Palmerston North 4441
New Zealand

About us

Since 1984 Redpath have been designing, manufacturing and installing industry leading NZ made commercial greenhouse, Lifestyle Greenhouses and Animal shelter buildings. We have installed 1000's of fully engineered, permit approved commercial and lifestyle structures for the Horticultural and Animal Shelter industry nationwide and export them worldwide.

Our buildings size range goes from small designs up to buildings that are many hectares in size.

We have 30+ staff and 16 dedicated building crews to give our customers "peace of mind" service and one of the best after sales maintenance services available.

We manufacture an average of 10 -15 hectares of buildings each year.

We supply direct to you and offer a full range of horticultural films, fabrics, and equipment to support our buildings range and general farm needs. You can order our products using the secure on-line shopping cart on this site and you will also receive an automatic discount.

In November 2023 Redpath purchased the Stock, Plant and selected IP of Taylor Built Greenhouses a long-standing manufacturer and supplier to the Horticultural industry. Many TaylorBuilt products continue to be available from Redpath.

We try to keep this product index up to date and it represents our latest products. Any information within this product catalogue is only a brief description of our products and services range and should not be considered as complete. Please note our terms and conditions on website.

Check out our Facebook, Instagram and YouTube

Factory address: 16 Bounty Place, Kelvin Grove, Palmerston North 4414

Postal: P O Box 9058, Terrace end, Palmerston North 4441

Factory & Office address
16 Bounty Place
Kelvin Grove
Palmerston North 4414
New Zealand



Postal address
PO Box 9058
Terrace End
Palmerston North 4441
New Zealand

Contacts and Information

- ★ Please read the below Suppliers Statement before purchasing goods.
- ★ Detailed conditions of sale are as per the reverse side of the Redpath Invoice.

Head Office, Factory and Sales
Redpath Pacific Ltd

Free Phone: 0508-733-728
International Phone: (64)-6-353-5955

P.O. Box 9058, Terrace End 4441
16 Bounty Place,
Kelvin Grove, Palmerston North 4414

Email: redpath@redpath.co.nz
Web: www.redpath.co.nz

Redpath Taranaki Rep:
Dean Shephard: 022 657 2718

SUPPLIER'S STATEMENT

This Redpath® catalogue with its written and illustrated information is a brief advertisement and generalisation for products and services supplied. Its limited capacity does not allow for any detailed or technical product information needed to ascertain exact product suitability for end use. Detailed technical information and support pertaining to installation, durability, structural capacity, suitability and compatibility etc (including any performance based data relating to building codes etc) of any product or buildings listed within the catalogue are available from our technical staff.

It is recommended customers request additional information from Redpath® and/or seek advice from qualified industry consultants if they are unsure of any listed products suitability, design purpose or installation techniques.

Note: Redpath® products when used outside the Redpath® intended design purpose or installation recommendations may not meet their expected performance and any warranties may/will be voided.

Redpath® is the trading name of Redpath Pacific Ltd (New Zealand).

Registered Trademarks: New Zealand: Redpath; B238370, B238374, B238375, #714297. Dura-Tough; #253580, Ecoshelters; B273562, Kerilea #608428, Duralock #769019 Australia: Redpath #763290/1052827, Ecoshelter #673667, Eco-shelter #932309, Riococo #1053216, LMUV4 #1053216 Other Countries: U.S.A: Redpath #3,097,421. Europe: Redpath #004431136

Patents: New Zealand: Raised Ridge # 337731, Ventilation Mesh System #523395 Australia: Raised Ridge #776802. Other Countries: U.S.A: Ventilation Mesh System #7,074,124 Canada: Ventilation Mesh System #2,435,725

Other Redpath nominated trademarks/brands are:

Durashade, Durashelter, Duraflex, Polyweave, Patchbond, Polyguard, Shadeshield, Windshield, Weedshield, Vent-net, Insulnet, Biomesh, Autowinder, Eziwinder, Polyfan, Supertwin, Superlight Supersingle, Ultraspan, CropCover, Rain Cover, Colonial series, Propagation series, Omega Clip, Vortex HAF Fan©

Copyright: (2010) Reproduction in whole or part of this catalogue including images is not permitted without the written permission of Redpath Pacific Ltd

Terms & Conditions of Sale

1. Application:

These conditions of sale shall apply to every contract ((except for commercial building sales for which the conditions outlined in the SSC (specifications & Supply contract) will apply)) for the sale of goods which is made by Redpath Pacific Ltd (the seller) or any related company of Redpath Pacific Ltd.

2. On-Line Ordering

the Buyer acknowledges and agrees that:

- a) The Seller does not guarantee the website's performance.
- b) Display on the website does not guarantee the availability of any particular Materials; therefore, all orders placed through the website shall be subject to confirmation of acceptance by the Seller.
- c) On-line ordering may be unavailable from time to time for regularly scheduled maintenance and/or upgrades.
- d) There are inherent hazards in electronic distribution, and as such the Seller cannot warrant against delays or errors in transmitting data between the Buyer and the Seller including orders, and you agree that to the maximum extent permitted by law, the Seller will not be liable for any losses which the Buyer suffers as a result of on-line ordering not being available or for delays or errors in transmitting orders.
- e) When making a transaction through the website, the Buyer's information will pass through a secure server using SSL (secure sockets layer) encryption technology or any other similar technology as disclosed by the Seller and/or displayed on the website. The encryption process ensures that the Buyer's information cannot be read by or altered by outside influences; and
- f) If the Buyer is not the cardholder for any credit card being used to pay for the Materials, the Seller shall be entitled to reasonably assume that the Buyer has received permission from the cardholder for use of the credit card for the transaction.
- g) The seller takes no responsibility for details provided by the buyer that might be incorrect or false or incomplete or misleading.
The Seller reserves the right to terminate the Buyer's order if it learns that you have provided false or misleading information, interfered with other users or the administration of the Seller's business, or violated these terms and conditions.

3. Specifications:

The Buyer acknowledges that all descriptive specifications, illustrations, drawings, data, dimensions, and weights stated in the Seller's website, price lists or advertising material, are approximate only and are given by way of identification only. The Buyer shall not be entitled to rely on such information, and any use of such does not constitute a sale by description, and does not form part of the Contract, unless expressly stated as such in writing by the Buyer

4. Price:

- 1.1 The purchase price of the goods shall be the price ruling at the date of delivery unless otherwise agreed in writing.
- 1.2 Any price indications or price lists are subject to alteration to the price ruling at the date of delivery.
- 1.3 Unless otherwise stated, the website purchase price is inclusive of Goods and Services Tax and other duties and taxes which, if payable, shall be to the buyer's account and shall be governed by the provisions of clause 3 below as if they were part of the purchase price.

5. Payment

Subject to any variation of this clause which is notified to the buyer in writing, the purchase price of the goods shall be due and payable (in full) prior to dispatching of order unless otherwise stated.

6. Delivery

- 6.1 The seller will make all reasonable efforts to have the goods delivered to the buyer on the date agreed between the parties to be the date of delivery. The buyer is responsible for unloading of all goods.
- 6.2 For website sales / On-line sales the delivery address and service options is selected solely by the buyer. If the delivery service or options chosen do not match the clients delivery details / needs the additional cost is to the buyer. For example if the goods require specialist unloading equipment or manpower then any additional cost is to the buyer. For on-line sales the Seller uses an 'average freight rate calculator" to estimate freight costs. If the buyers property or site access location is beyond the local freight companies delivery range or service area there may be an additional delivery cost(s) and these will be to the buyers care.
- 6.3 Goods may be delivered in instalments, and in such case each delivery shall be regarded as a separate contract and goods delivered shall be paid for accordingly. The failure to make any delivery shall not vitiate the contract as to other deliveries.
- 6.4 Notwithstanding any provisions as to the date of shipment an delivery, shipments or deliveries may be totally or partially suspended by the Seller during any period in which the Seller may be prevented from delivering through any circumstances outside its (reasonable) control - including but not limited to any: fire, accident, earthquake, flood, crime, war, blockage, civil commotion, epidemic, strike, lockout, labour dispute (whether or not at the works of the manufacture), shortage of fuel, power or raw materials or inability to obtain transport, and no such suspension shall entitle the buyer to cancel this contract or to refuse to accept delivery of the goods.
- 6.5 If the Buyer specifically requests the Seller to leave Materials outside the Seller's premises for collection or to deliver the Materials to an unattended location then such Materials shall always be left at sole risk of the Buyer and it shall be the Buyer's responsibility to ensure the Materials are insured adequately or at all. In the event that such Materials are lost, damaged or destroyed then replacement of the Materials shall be at the Buyer's expense.

7. Kitsets

7.1 A full Materials list will be provided by the Supplier upon delivery of the kitset. The Customer shall be responsible for checking that Materials provided match the list with any shortages or damages being notified to the Supplier within seven (7) days of delivery. Failure to notify the Supplier within this time, the Supplier shall be entitled to accepting that the Materials are deemed to be correct and delivered.

8. Goods for Return

No goods shall be returned to the Seller unless the buyer first obtains the Seller's written consent to such return, and this consent must be sought by the buyer within 14 days of the buyer receiving the goods. When the Seller does accept the goods for return, the costs for the return shall be to the buyer's account and the Seller may in addition charge to the buyer a 10% handling fee.

9. Damage or Loss in Transit

If/when taking delivery at the wharf or otherwise, the buyer signs a clean receipt for goods which later are found to have been damaged or lost in transit, thereby prejudicing a possible claim on a third party, the Seller shall be freed from all responsibility for the loss or damage involved.

10. Default

If an Event of Default occurs, and without prejudice to any other rights, powers or remedies the Seller may have:

- a) the Seller may suspend or terminate the supply of goods to the buyer and any of its other obligations under the Contract (and any other Contract), or cancel all or any part of any order with the buyer which remains unperformed,
 - b) All amounts owing shall immediately become due and payable notwithstanding that the due date for payment has not arisen and,
 - c) The Seller may charge the buyer a default penalty interest on any moneys due on a daily basis rate of 1.5% per month until the date of payment is received in full from the buyer.
 - d) The Sellers Debt Collection Agent may charge the buyer a fee equal to 25% of the unpaid portion of the price and other legal and collection costs not covered by the fee, but not less than \$150.00.
 - e) In the case of a default in payment/s, warranty claims may not be accepted by the Seller until all goods are paid in full.
- 10.1 The Seller will not be liable to the buyer for any loss or damage the buyer suffers because the Seller exercises any rights, powers or remedies after the occurrence of an Event of Default, including under this clause.
- 10.2 The buyer agrees that, at any time after an Event of Default has occurred or at any time if any Goods are at risk, the Seller may:
- a) Take possession of any goods; and/or
 - b) sell or dispose of any goods in such manner and generally on such terms and conditions as the Seller sees fit, and, in each case, otherwise do anything the buyer could do in relation to the goods. The Seller and the buyer agree that section 109(1) of the PPSA is contracted out of in respect of particular Goods if and only for so long as the Seller is not the secured party with priority over all other secured parties in respect of those goods. As agent for the buyer, the Seller (and its employees and agents) may, without prior notice, enter upon any land or premises where the Seller believes the goods are kept in order to take possession of and/or remove them. The buyer agrees to procure all other rights (including consents) necessary to enable, and to indemnify the seller (and its employees and agents) against any liability incurred in connection with, such entry, taking of possession and removal.

11. Property

- 11.1 Property in, ownership of and title to the Goods shall not pass to the buyer until:
- a) the Buyer pays the amount owing in full and all other amounts owing under other Contracts; or
 - b) (If applicable) the Buyer resells the Goods pursuant to the authority granted by these Terms.
- 11.2 Until property in goods passes to the buyer, the buyer holds the goods as the sellers Bailee and, as agent for the buyer, the seller (and its employees and agents) may, without prior notice, enter upon any land or premises where the seller believes the goods are kept in order to inspect the goods. The buyer must store the goods so they can be identified separately from the buyers own goods. The seller authorizes the buyer, in the ordinary course of the buyers business, to use the goods or resell them for full consideration. This authority is revoked immediately if:
- a) an event of default occurs; or
 - b) The buyer notifies the seller in writing that this authority is revoked.

12. PPSA

- 12.1 To the extent permitted by law, the buyer and the seller contract out of:
- a) section 114(1)(a) of the PPSA; and
 - b) The buyer's rights referred to in sections 107(2) (c), (d), (h) and (i) of the PPSA.
- 12.2 The buyer waives its right to receive a copy of any verification statement in respect of any financing statement relating to any security interest granted to the seller by the buyer.
- 12.3 The buyer agrees to indemnify the seller, upon demand, for all costs and expenses (including legal fees) incurred by the seller:
- a) As a result of the occurrence of an Event of Default (including upon actual or attempted enforcement of any security interest granted to the seller by the buyer);
 - b) In complying with any demand made under section 162 of the PPSA.
- 12.4 On request of the seller, the buyer shall meet all the sellers requests (including signing any of any delivery docket, invoices etc) to provide the information necessary to maintain a well-documented inventory of security interest/s granted to the seller by the buyer (including registration of financing documents)

13. Risk

13.1 The risk in the goods and purchases shall, unless otherwise agreed in writing, pass to the buyer on delivery.

13.2 Without limiting the generality of clause 10.1 above, the buyer assumes all risks and liabilities;

13.2.1 For any consequences arising from the use of any or all of the goods whether singly or in combination with other products.

13.2.2 For any damaged goods; and

13.2.3 For any wrong deliveries ex-wharf or otherwise.

14. Damages

No damages, consequential damages, direct or indirect, in respect of this contract, shall exceed the invoice value of the specific goods or articles complained of; and no damages will be recoverable by the buyer, in any event, unless he gives written notice of this claim to the seller within fourteen days of receipt of the goods.

15. Warranty

All goods are guaranteed to be of merchantable quality. Any warranties or conditions, statutory or otherwise, as to the goods quality or fitness for any purpose are excluded. Where, however, goods are supplied to the specifications of the buyer, these goods are guaranteed by the seller to be in accordance with those specifications. In the case of a default in payment/s, warranty claims may not be accepted by the seller until all goods are paid in full.

16. Export Prohibition

These goods are sold for use in New Zealand only and are not to be exported elsewhere, directly or indirectly, without the prior agreement of the seller.

17. Contract

Instructions, verbal stipulations, conditions and variations which are not expressly set out in the contract will not be recognised.

18. Conditions Severable

Any part of these conditions is severable and if any provision herein is held to be illegal or unenforceable for any reason, this illegality or unenforceability shall affect only that portion of these conditions which is in conflict and the remainder of these conditions shall remain in full force.

19. Variation

These conditions of sale may be unilaterally varied by the seller from time to time, and every variation made pursuant to this clause 17 shall be deemed to have been accepted by the buyer unless the buyer can reasonably be seen to have been unfairly prejudiced by the variation.

20. Termination

The seller may at any time in its sole discretion without notice to the buyer terminate the credit account. Upon termination all amounts outstanding for goods previously supplied to the buyer will become immediately due and payable by the Buyer. After termination the seller will not be obliged to supply any goods to the Buyer on credit terms

21. Jurisdiction

All contracts made between the seller and the buyer shall be governed by and construed in accordance with New Zealand law.

22. Clauses 18 to 26 as hereinafter provided apply on in the case of exports and must be read in conjunction with clauses 1 to 18.

23. Factors Rendering Export Impracticable

If after goods have been set aside or acquired to fill this contract or part thereof. Export Regulations in the country of origin or any other reason beyond the control of the seller render it impracticable to export or ship such goods from the country of origin, any loss thereby incurred (whether by resale in that country or otherwise) shall be borne by the buyer. Any storage costs, insurance, handling, or other charges connected therewith shall be for the buyer's account. C.I.F. & E. prices in this contract are based upon the rate of marine insurance and freight ruling at the date of the contract, and any subsequent variations in the cost of such insurance and/or freight is to be on the account of the buyer.

24. Payment for Export Goods

The purchase price of the goods shall be due and payable by return on receipt of invoice or pro-forma invoice unless specifically agreed in writing to the contrary.

25. Foreign Currency Conversions

Where a price is expressed in a currency other than the New Zealand Dollar, the amount payable on the date the invoice is due for payment shall be the New Zealand currency equivalent of the price on the date negotiable document are received by the seller from its overseas principals by reference to the 9.00 am ANZ NZ Ltd selling rate for New Zealand dollars.

26. Insurance

Unless otherwise expressly provided, the seller undertakes to insure the goods W.P.A. under his own open policy. Any premiums paid by the seller for the insurance are to be added to F.O.B. or C&F. contract price. The seller may cover for War Risk Insurance at the buyer's expense at any time prior to the arrival of goods at their destination.

27. Risk of Voyage

Whether the sale is F.O.B., C.I.F. & E., the buyer takes all risks of voyage, and production by the seller of a Bill of Lading acknowledging receipt by the or on behalf of the ship of the goods (or of the packages containing the goods) in good order and condition shall, as between the seller and the buyer, be taken as proof that the goods were in fact shipped in good order and condition.

Factory & Office address
16 Bounty Place
Kelvin Grove
Palmerston North 4414
New Zealand



Postal address
PO Box 9058
Terrace End
Palmerston North 4441
New Zealand

Notes

See our website for our monthly specials

Email: redpath@redpath.co.nz ≈ Phone: 0508-733-728 ≈ Website: www.redpath.co.nz